

# Ci Packages

Financials, Supply Chain and Corporate Performance Management – 11.09.04.011

**Oliver Jarman**

Product Customer Service Manager

Commercial in confidence July 2013



- Ci Packages have been designed to simplify the delivery of Ci software for our customers
  - Small, logical deliverables of T1 software
  - No more revisions or hot-fixes
- Ci Packages were introduced in the Consolidation Release 11.09.04.011
- The Consolidation Release will be supported for 5 years
- Ci Packages has redefined our software delivery mechanism and will allow us much more flexibility around supporting Ci
- Over 300 enhancements in Ci Packages for Corporate Products and counting...



- New Alerts available for Accounts Payable
  - Creditors with Bank Account changes in the past 30 days,
  - Vendors with no activity in the last 6 months,
  - One time Vendors.
  - Creditors with Payments disabled.

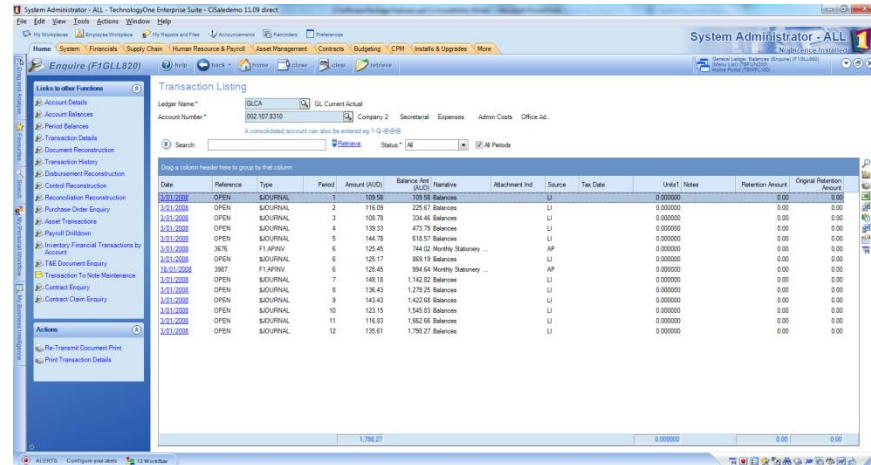


- Ability to restrict Payment Void process with approvals.
- Option to automatically disable Payments for a Creditor when the Bank Details for the account have been changed.

- New Alerts available for Accounts Receivable
  - Debtors with Receipts disabled
  - Debtors with Bank Account changes in the past 30 days.
- Option to automatically disable Cash Receipting for a Debtor when the Bank Details for the account have been changed
- Ability to allow users to prefix Statements Transmissions (for Export and Emails) with customer Account number
- Option to omit previously reported transactions in new Reminder Letter Worksheet.
- Enhanced Statement Worksheet Selection to allows users to Suppress Future Items from the statement worksheet.

- Option to control whether Address Details defaulted from an Address Code are editable during Data Entry
- Additional default calculation fields which allow for displaying/storing further attributes about Accounts during Data Entry - in particular: Account & Component Long Descriptions and Payment Details
- Functionality to allow GST adjustments to be made in Auto Invoice Matching through Document File Import
- New fields available in Document Import - Document Reason Code, Date, Narration 1 and 2, and Print Required indicator

- Transaction User Fields available in Columns and as Criteria in the Ledger Account Transaction picklist
- Control Account and Disbursement transactions enhanced to display additional fields from Subsidiary Ledger transaction.
  - Reference
  - Date
  - Source
  - Doc Type
  - Narration
  - User Field





- Ability to auto generate Reference for manual Ledger Book Transactions
- Option to keep Statement File in the original directory after it has been loaded
- Ability to specify Today's date as the Load to Date against Ledger Book Load, to support running the process as a recurring DP job
- Ability to specify a System Variable against the Load to Period in Ledger Book Load, to support running the process as a recurring DP job

- New Function Parameter in Chart Account Maintenance to enable/disable Payments/Cash Receipting controls
- Ability to import attachments with Chart Accounts
- Additional validation on Chart Import to report Warnings when Selection Codes and User fields are included in the import but not defined on the Chart.
- Added “Account Component Picklist” access to Security Category Maintenance
- Added the ability to nominate a component to be filtered when viewing accounts in the Account Component Picklist



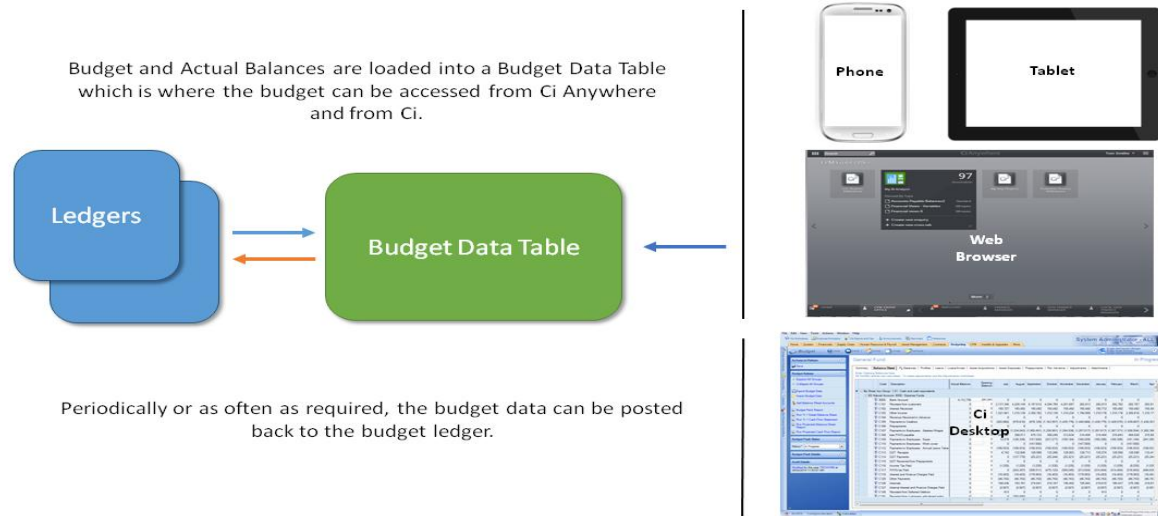
- New Imports for User Details, Assigned Access and User Privileges
- New Imports for import Profile Details, Assigned Roles, Delegation Limits and Privileges
- Taxable Payments Annual Reporting (TPAR) Enhancement



- Ability to import the user a Requisition is being created for in Purchase Requisition Import.
- Option to easily switch between Inclusive/Exclusive entry modes when creating a Requisition in My Requisitions
- Purchase Requisition Release has been enhanced so that the email addresses used for Purchase Order Transmission can be specified using system variables
- Enhanced Purchase Order line to records Contracts Claim number when goods receipt is processed via the Claims process

- **Enhanced Budget Rules calculator functionality:**
  - Criteria allowing processing of rules to be split into a number of smaller processes
  - Criteria can be nominated to ignore the Budget Model criteria and update Accounts that sit outside the Budget Model.
  - Recalculate spreading is available in the Rules
  - Rules Calculator processes to be defined for specific areas and run as short efficient processes.
  - Calculation processes enhanced can be setup as independent functions that can be assigned to specific users to run.
- **Rows in Budget Tabs can be filtered based on the Attachments Column**

- A new option has been introduced to Enterprise Budgeting to store budget data in Budget Data Tables where the data can be stored independent of the ledgers



- The advantages of using BDT's are:
  - save budget data without posting to ledgers
  - restrict update of ledgers until the Model or version has been approved/finalised
  - Reduced transactions in the update ledgers, less space being used on the database
  - Quicker saving – not having to run the ledger import including posting and potentially disbursements
  - Option to run the Budget without updating the ledgers at all - standalone budgeting
  - Have multiple versions of the budget without having to have multiple ledgers
  - Move the updating of ledgers to overnight or after hours

- Data Analysers to access ETL Steps and Warehouse Table data
- Step for loading Excel Worksheets, Fixed Length and Delimited Files
- Call Web Resource/Service Step offers the ability to provide network authentication details and HTTP exposes custom headers
- Call Web Resource/Service Step offers the ability to provide network authentication details and HTTP exposes custom headers
- A new step 'Convert to PDF' has been implemented for converting Word documents and Excel spreadsheets
- Option to Assign Document File to a User based on Workflow Suspend action, where errors occur on Document File Import Step

- New ETL Steps for importing:
  - System Variables/User Parameters
  - Rates
  - Item Codes
  - Allocation Rates
  - Applications
  - Commitments
  - Travel & Expense Rates
  - Exchange Rates



#### Extract Steps

- Run Query
- Run SQL
- Load Spreadsheet
- Load File



#### Transform Steps

- Add Columns
- Update Columns
- Join Memory Tables
- Filter Memory Table
- Set Variables
- Run BETL Process
- More ...



#### Load Steps

- Warehouse Table – Delete
- Warehouse Table – Import
- Send Email
- Export to Excel, CSV, XML
- Budget Ledger Wks Import
- Other Imports?

- Support for Excel 64 Bit
- Support for Office 2013
- Ability to access new Data Analyser Verification window from XLOne Data Source list
- New Data Analyser Verification window to assist with identifying duplicate Analyser Items







technology**one**

---

Transforming business, making life simple